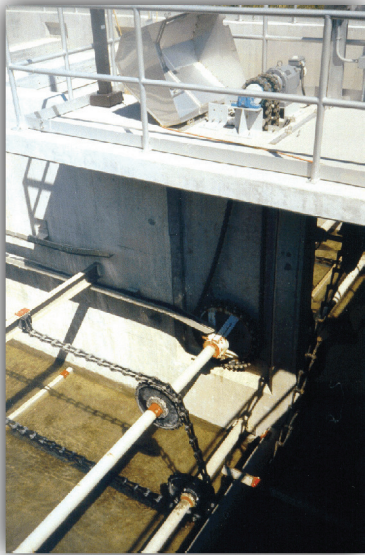


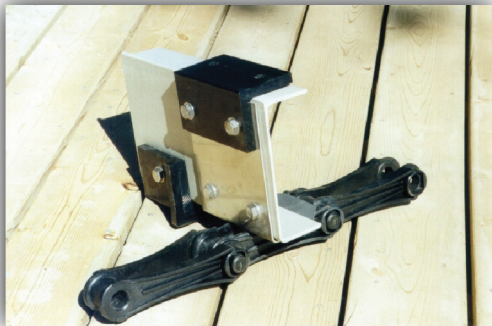


## ***CHAIN AND FLIGHT SCUM COLLECTOR***



Arlat's chain and flight scum collector equipment is mounted in the rectangular tanks into which aerated municipal water is fed. The action of the flights is to scrape the sludge, which settles to the bottom, to one end where it is collected and transferred to the digesters. The returning flights travel along the surface of the tank skimming all the scum, which floats, into Arlat's scum trough or some other removal device.

The Arlat design utilizes non-metallic chain and sprockets to reduce weight and cost while providing a reliable installation. Flights are fiberglass and are connected to the chain with stainless steel brackets, a feature unique to Arlat.



The system drive shaft is the full width of the tank and runs in self cleaning, self lubricating babbit bearings. It is driven by non-metallic chain with stainless steel pins. The system is powered by a helical gear motor with aluminum guard and protected by a shear pin coupling with a stainless steel hub and UHMW-PE rim.

Materials of construction have been carefully chosen to reduce weight while optimizing strength as well as for ease of maintenance and long life.

